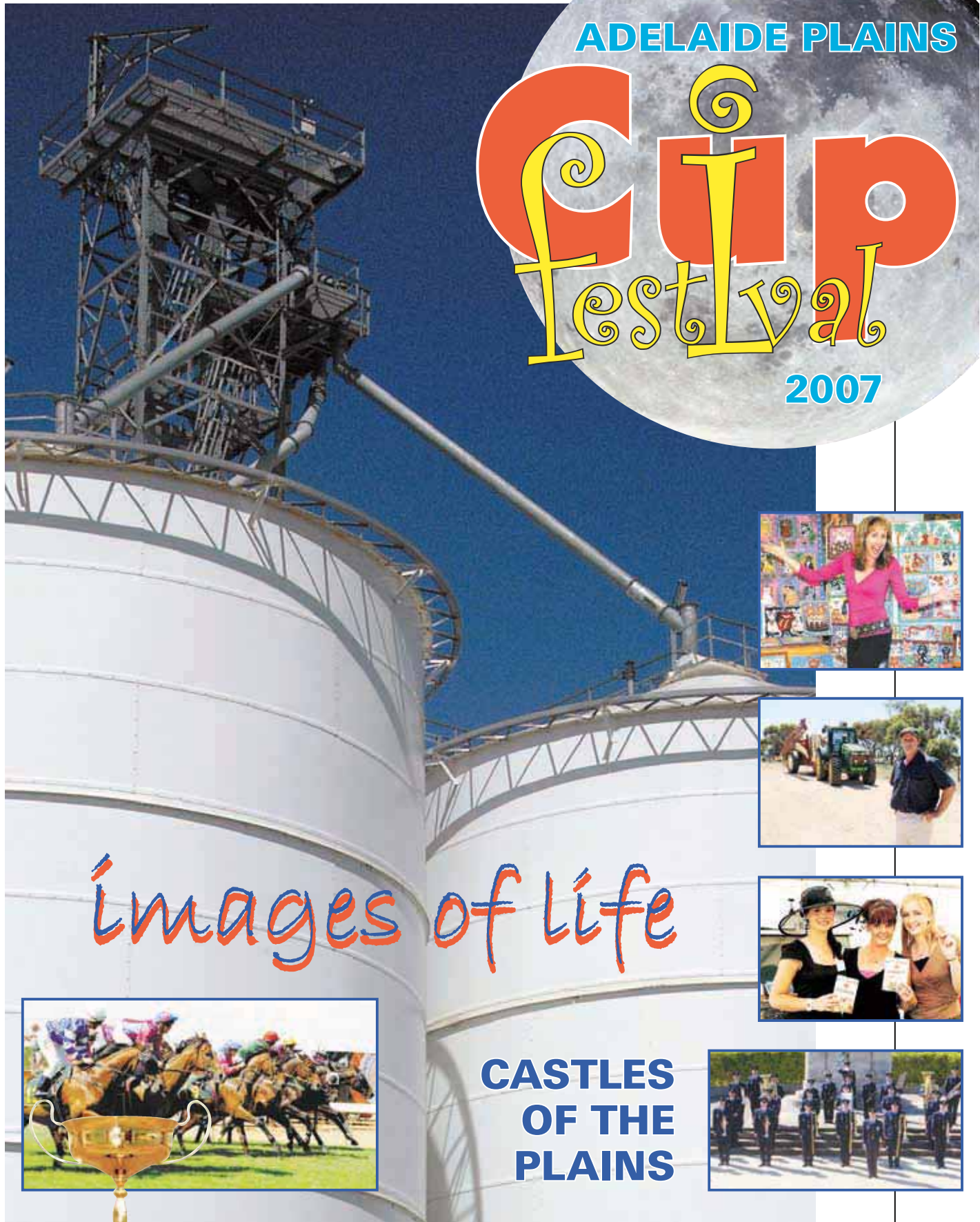


■ 12 PAGE SOUVENIR LIFT-OUT

**ADELAIDE PLAINS**

# Cup Festival

**2007**



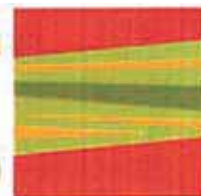
*Images of Life*



**CASTLES OF THE PLAINS**



**adelaide plains**



FRIDAY MARCH 2 to SUNDAY MARCH 4

**OFFICIAL PROGRAM**



**MESSAGE**

*From*

**Minister for Tourism**

**WELCOME** to the Adelaide Plains Cup Festival.

This is a fabulous opportunity for you to discover the brilliant blend of food, wine, art, sport and heritage that makes the Adelaide Plains among our special places in South Australia.

I am delighted that once again the South Australian Government is supporting this festival.

Events and festivals are a proven attraction for visitors and locals alike, which is good for local jobs, and good for local business. That is why the State Government is investing more than \$640,000 in more than 100 regional events this year, including support for the Adelaide Plains Cup Festival.

From Balaklava to Two Wells, this festival is an opportunity to taste the Plains produce as part of a host of things to see and do over a great weekend. I thank the Plains communities for bringing together a great program showing the best the Adelaide Plains has to offer.

Do have a brilliant time.

*Jane Lomax-Smith*  
**Minister for Tourism**

## A cultural showcase

Talented artist, Natasha Robertson, says creativity is an integral part of her personality and self-expression.

Her favourite medium is photography, but she also loves to draw, paint, design tattoos, compose and play music, and write short stories.

She has been involved with the art community for about 10 years, through writers guilds, SA Writers Centre, PTAA, Fringe Festival and more recently was made artistic director for the Adelaide Plains Castles project.

Through her passion for art, she has developed Pure Visions, a freelance photographic and art business.

Adelaide Plains and its Castles is her first major project.

"I was asked late last year whether I could help put an idea together to show-

case the heritage of the Adelaide Plains area in images projected onto the side of silos," said Natasha.

"Being a country girl who grew up in Moonta and having parents and relatives living in Port Wakefield, I jumped at the opportunity to showcase the country that I love most in art form."

Through imagery, she hopes to tell the story of the history of the Adelaide Plains, its people and its cultural growth.

"I have a vision of reconnecting and educating people with this important information."

Natasha believes it is important to discover "this side of our culture and enrich our society to the knowledge of how important our past has been in shaping our future".



ABOVE: Natasha Robertson will tell the story of the Adelaide Plains through imagery  
LEFT: The Morris Men.

## Our choir a high note

A big crowd favourite, Adelaide Plains Male Voice Choir has been performing across South Australia since 1985, and is one of many participants included in the Adelaide Plains and its Castles event.

They will perform a repertoire of golden oldies to sacred numbers to hymns and anthems. Always well received the choir has recorded two CDs.

Rocky River Bush Band was originally formed in 1980 for the inaugural Laura Folk Fair in the mid north where the Rocky River flows. The band has since developed into one of Australia's foremost folk bands and boasts some of South Australia's leading folk musicians.

With five international tours to their credit, the band specialises in traditional

and contemporary Australian folk and bush songs, Anglo/Celtic music with a special fondness for sea shanties and songs of the sea.



# ADELAIDE PLAINS

## OFFICIAL PROGRAM

### FRIDAY, MARCH 2

- **Festival Launch & Adelaide Plains Emu Awards** - \$10 breakfast  
7.30am to 9.30am, at Owen Institute
- **Two Wells Library Open Day**  
9.30am to 3pm - Two Wells Institute
- **"Down to Earth" Art Exhibition**  
2pm to 4pm - Balaklava Courthouse Gallery
- **Wattle Ridge Open House**  
6pm to 8.30pm - Wattle Ridge  
(Francis Street, Balaklava)

### SATURDAY, MARCH 3

- **Two Wells Library Open Day**  
9am to 11am - Two Wells Institute
- **Balaklava Traders' Day**  
9am to 1pm - various locations
- **Balaklava Bead Fair**  
10am to 4pm - Town Hall

### SATURDAY, MARCH 3

- **Arts and Craft Community Gathering Exhibitions**  
9am to 5pm  
Balaklava main street (various locations)
- **Heritage Displays** 10am to 3pm  
Centenary Hall (May Tce, Balaklava)  
Urlwin Park (Short Tce, Balaklava)
- **BEC Taste the Adelaide Plains**  
10am to 3pm  
Virgara Winery (Angle Vale)
- **Wattle Ridge Open Day**  
9.30am to 6pm - Wattle Ridge  
(Francis Street, Balaklava)
- **Country Pubs & The Bush**  
10.30am to 4pm - Mallala Institute
- **Landmark Summer Golf Ambrose**  
9.30am to 4pm - tee off  
Balaklava Golf Club

For further information contact Simon Millcock 0439 852 577



what's on?

PLAINS CASTLES

**WHEN:** Saturday March 3, 5.30pm-9pm  
**WHERE:** ABB Silos, Balaklava  
**WHAT:** Alcohol and smoke-free family entertainment including the RAAF Central Band - Concert Band, Japanese drumming, highland pipes and drums, folk music, Morris dancers, choirs and images of the Adelaide Plains projected onto Balaklava's landmark silos.

**B**ALAKLAVA'S iconic white silos will be dramatically transformed into a stunning slideshow on Saturday evening, March 3 throughout a feast of entertainment during Adelaide Plains and its Castles.

The headline performance will be RAAF Central Band - Concert Band, providing a blend of big band music to a full program, and may even work with some of the other performers to create a real party atmosphere.

Morris dancers, Japanese drumming, highland pipes and drums, choirs, and bush bands are just some of the line-up for this unique show.

Gates open at 5pm for the free, alcohol and smoke-free event. Bring a deck chair or a blanket and settle back for a top night.

It will be a visual experience not to be missed. Either pack a picnic basket or grab a bite from the on-site catering vans. As the show is held on bitumen, no glass will be allowed on-site and security will monitor the area. Car parking is available at Ralli Park.



THE Festival Statesmen Barbershop Chorus will sing old and new arrangements.



## Snapshots of life in silo slideshow

Follow the signs for entrance into the ABB site. Another of the performers is Adelaide Morris Men, a roving group of traditional folk dancers who will perform to live accordion music in costumes of red baldricks on white shirt and pants, black top hats and handkerchiefs or sticks.

Southern Districts Pipes and Drums is one of Adelaide's most progressive and friendly pipe bands. Wearing striking red Clan Cameron tartan, the Scottish

pipe band will perform both marching and static numbers. Festival Statesmen Barbershop Chorus is guaranteed to bring a nostalgic smile to your face.

Formed in 1992, the group comprises a four-part harmony chorus made up of about 15 men who will sing old and new arrangements.

Ataru Taru Taiko traditional Japanese drummers achieve their brand of music with large drums, with movement and visual effects as important as their unique sound.



MESSAGE

From

Mayor Maitland

ON behalf of the people of the Adelaide Plains, may I say welcome and extend an open invitation to attend our unique regional community festival.

The 2007 Adelaide Plains Cup Festival focuses this year on arts and heritage with more than 20 events and hundreds of performers and artists gathering in the region.

Combined with local food and wine, our Adelaide Plains will be showcased. Our aim is to bring together the many communities who make up the tapestry of the Adelaide Plains and this year's festival follows the successful formula from our previous two. Visitors or locals should take the time to enjoy the activities on offer, absorb the great atmosphere, catch up with friends or relatives and experience for yourself why the Adelaide Plains is booming.

After you have been entertained, wine and dined, visited the galleries and heritage sites, read some poetry or become involved in the sport, join the fun of the Primo Australia Adelaide Plains Cup on the Sunday for a great family day at the races.

James Maitland

Wakefield Regional Council Mayor  
 Adelaide Plains Marketing chairman

# CUP FESTIVAL



FRIDAY MARCH 2 — SUNDAY MARCH 4

## SATURDAY, MARCH 3

- **Historical Display**  
11am to 3pm - Pt Wakefield Courthouse
- **Welcome to Wakefield**  
11am to 3pm - Civic Centre, Balaklava
- **"Down to Earth" Art Exhibition**  
11am to 5pm - Balaklava Courthouse Gallery
- **Balaklava Urban Design Plan Launch**  
11.30am to 12 noon - Civic Centre, Balaklava
- **Adelaide Plains & its Castles**  
5.30pm to 9pm - ABB Silos, Balaklava
- **Longies Fest 07**  
7pm til late - Long Plains Cricket Club

## SUNDAY, MARCH 4

- **Balaklava Garage Sale**  
8am onwards, Balaklava Township
- **Adelaide Plains Touch Football**  
8.30am to 12noon, Balaklava High School

## SUNDAY, MARCH 4

- **Arts and Craft Community Gathering Exhibitions**  
9am to 5pm  
Balaklava main street (various locations)
- **Wattle Ridge Open Day**  
9.30am to 6pm, Wattle Ridge  
(Francis Street, Balaklava)
- **Heritage Displays**  
10am to 3pm  
Centenary Hall (May Tce, Balaklava)  
Urlwin Park (Short Tce, Balaklava)
- **Balaklava Bead Fair**  
10am to 4pm - Town Hall
- **Primo Australia Adelaide Plains Cup**  
10.30am to 10pm  
Balaklava Racing Club
- **"Down to Earth" Art Exhibition**  
2pm to 4pm  
Balaklava Courthouse Gallery

For further information contact Simon Millcock 0439 852 577

Sponsored by Landmark

**Special FEATURE Adelaide Plains**



**REMEMBER!**

to bring your golf clubs to the Adelaide Plains Cup Festival

**Saturday March 3**

Tee off 9.30am to 4pm



**Open Ambrose**

- Team of 4 • \$50 per team
- Includes BBQ tea

**Balaklava Golf Club**

PO Box 153, Balaklava 5461 -  
PHONE: 8862 1612

4km East of Balaklava on Auburn Road

**Port's cargo of history**

THESE days Port Wakefield Courthouse offers visitors a fascinating glimpse of the town's rough and tumble days as a busy port - a far cry from the days when it took two policemen to keep law and order.

Built in 1858, the Courthouse, police station and cells were by all accounts well used.

As early as 1850, the wharves were a hive of industry for the Copper Company to ship out copper ore.

Port Wakefield was a raw town with a floating population of sailors, bullock drivers, and Chilean muleteers.

At least 13 nationalities plus the local Kaurna people resided there. Hundreds of historical and pioneering photographs and memorabilia will be on display on Saturday March 3, including images of ketches and muleteers.

Admission is by gold coin.



ROS Nankivell (left) and Wendy Garvie with a selection of Port Wakefield memorabilia



**what's on?**

**Pt WAKEFIELD DISPLAY**

**WHEN:** Saturday March 3, 11am to 3pm

**WHERE:** Port Wakefield Courthouse

**WHAT:** Wander around the old police station, courthouse and cells. Historic display of photos and memorabilia dating back to Port Wakefield's pioneering days.

**New 'look' at Two Wells**

THE festival is an ideal time to explore the new Two Wells Public Library and District Council of Mallala Library Service. The facility at Two Wells Institute will be open on Friday March 2 and Saturday March 3.

Have fun guessing how many bookmarks are in the Bookmark Bottle. The visitor who correctly guesses (or closest) will win a special prize. Discover and learn about The Big Book Club and The Little Big Book Club. There will also be displays to ponder over.

**The greatest garage sale of all time**

RESIDENTS of Balaklava are invited to be part of a free 'Whole-town Garage Sale' on Sunday March 4.

Bargain hunters will need to be up early as sellers will open their doors from 8am.

Registration is not necessary,

but organisers say it would be an advantage for sellers to book and be included on a map of participating households.

Best of all, there is no registration fee. Householders are encouraged to put balloons or streamers at the end of their

streets so visitors (potential customers) can easily find garage sale sites.

It's a good opportunity to get rid of unwanted treasures you've been hoarding in the shed!

For further details phone Lynda Pedersen 8862 1545.



**LAST CHANCE SALE**

**2006 Stock Clearance - Massive Savings**

**PASSENGER CARS**

- Fiesta Hatch Manual** • 1.6 Ltr • Air • Power Steering • CD Player • Air bags • 5 Door (sido 101243) **\$15,490**
- Fiesta Hatch Auto** • 1.6 Ltr • Air • Power Steering • CD Player • Anti Lock Brakes (sido 101245) **\$17,700**
- Focus Hatch Auto** • 2.0Ltr • Air • Smooth Pack • Alloy Wheels • Cruise Control (sido 949612) **\$21,660**
- Focus Sedan Auto** • 2.0Ltr • Luxury LX model • Stunning Black (sido 924498) **\$23,990**
- Falcon SR Sedan Auto** • 4.0Ltr • Special Release Model • Fully Loaded (sido 884687) **\$28,777**

**COMMERCIAL VEHICLES**

- Ranger 4x2** • New release • Economical Turbo Diesel • Air • Power Steering • C/Chassis (sido 111957) **\$18,800**
- Falcon SE Utility** • T Bar Auto • Alloy Wheels • Cruise Control • Air • CD Player (sido 894425) **\$24,990**
- Falcon Tradesman** • 1 Tonner • Auto • Alloys • Air • Cruise • Tray (sido 877083) **\$25,990**

\*All vehicles in stock at time of advert preparation. Price excludes dealer delivery \$1295 + government costs. All prices include GST

**SCHAHINGER MOTORS**  
HAMLEY BRIDGE



Phone 8528 2095  
or After Hours 8528 2046



what's on?

**BEAD FAIR**

**WHEN:** Saturday March 3 and Sunday March 4  
**WHERE:** Balaklava Town Hall  
**WHAT:** Bead Fair market featuring beadmakers and artisans.

LYNDA Pedersen with a selection of just some of her creations.



**Bead Fair will add sparkle to weekend**

BALAKLAVA Town Hall be the venue for the Adelaide's fourth annual Bead Fair during the Adelaide Plains Cup Festival weekend.

An initiative of Lynda Pedersen from the Beadwork Gallery, Balaklava, the popular fair was first held in Morphett Vale in 2003 as an outlet for bead workers in the southern areas of Adelaide.

Due to the lack of a suitable venue, the fair lapsed in 2006,

but Lynda hopes the Balaklava venue will offer an even wider appeal and attract people from the Northern areas as well. Many stallholders are artisans who create jewellery and other beaded objects.

As the focus of popular beading has changed, so has the flavour of the fair, with some stallholders being lampwork bead makers who will be selling actual glass beads they have created.

These are a great drawcard and very sought after by people who want something special and unique. There will also be collectible and vintage beads as well as some local and interstate wholesalers selling beading supplies. A unique feature of the Balaklava Fair will be a \$3 "Come and Try" special for children to sit and make a small project.

Entry is free. Contact Lynda Pedersen 8862 1545.

**Art and craft flows through Balaklava**

THIS region has long been renowned for its wealth of creative art and craft.

Throughout the Adelaide Plains Cup Festival weekend, Balaklava will be bursting with displays, stalls and demonstrations.

With funding sourced through the drought relief program, the festival presents a golden opportunity for local artists and crafts people to band together and show the spirit and resilience of the people of the plains.

Adding to the festive atmosphere, South Australian singer/songwriter, Mary Laslett, will perform under the rotunda in Balaklava's Triangle at midday on Saturday.

Her rendition will feature songs from her recent CD.

Described as an inspirational singer/songwriter with a beautiful voice and meaningful lyrics, Mary accompanies herself on guitar and keyboard.

Digitally-produced fantasy

illustrations, framed paintings, clothing, crafts and Christmas decorations are just some of the inventive and unique arts and crafts that have featured in recent exhibitions.

There are still some spaces available to display your talents in Balaklava throughout the festival weekend.

For further details phone Janine Hinton 88620800 or email jhinton@wakefieldrc.sa.gov.au.



what's on?

**FESTIVAL LAUNCH, OWEN**

**WHEN:** Friday March 2, 7.30am to 9.30am  
**WHERE:** Owen Institute  
**WHAT:** Adelaide Plains Cup Festival launch by outspoken media personality, Peter Goers, followed by country-cooked breakfast and announcement of the Emu Awards winners.

**Emu awards to launch festival at Owen**

THIS year's Adelaide Plains Cup Festival launch will be celebrated with a country-cooked breakfast at Owen Institute where winners of the inaugural Adelaide Plains Emu Awards will be announced.

The breakfast costs \$10 and bookings are essential so be quick.

ABC Radio personality, Peter Goers, will be the guest presenter of the Adelaide Plains Emu awards.

The awards will be presented for four categories - individual, community group, business and event, with winners vying for the grand emu award.

The Emu Awards recognise locals who may have stuck their neck out and had a go, gone out of the comfort zone where

others may not have gone, provide a true spirit of entrepreneurship, leadership and freethinking in the Adelaide Plains.

Entries close 5pm on February 12, 2007.



Nomination forms and criteria can be obtained from The Plains Producer or Wakefield Regional Council.

A quartet from the Adelaide Plains Male Voice Choir will entertain the crowd. Local produce will be used to provide breakfast thanks to support from SA Grown, Primo Smallgoods and Foodland Balaklava.

Bookings for the launch breakfast close on at 5pm on Tuesday February 27.

To book phone Kellie Talbot on 8862 0800 or email ktalbot@wakefieldrc.sa.gov.au.



**Balco Australia**

Supporting local sport and the Adelaide Plains Community

New Hay Growers

register your interest to grow in 2007

Ph: Michael Tonkin 0417 808 566

*Working Local, Thinking Global*

**PRIMO ABATTOIRS**  
**PORT WAKEFIELD**

"Supplying quality pork & small goods to Australia and the World"



**Snowtown Road,**  
**P.O. Box 500, Port Wakefield**  
**Phone - 8867 1088**  
**Fax - 8867 1099**



what's on?

**VOLUNTEERS LUNCH**

**WHEN:** Saturday March 3, 11am

**WHERE:** Balaklava Triangle

**WHAT:** Luncheon dedicated to volunteers in Wakefield Regional Council. Bookings essential.

THE extraordinary support and contribution volunteers make in this region will be recognised by Wakefield Regional Council with a special luncheon during Adelaide Plains Cup Festival.

All volunteers within council's region are invited to the thankyou lunch in Balaklava Triangle on Saturday March 3 at 11am. For bookings contact: Janine Hinton ph 8862 0800.

**New residents welcome**

With the region booming and new housing and employment at an all-time high, Wakefield Regional Council is inviting any new residents to lunch to meet community groups that operate throughout the area.

The invitation is also extended to anyone who started working in the region last year.

Community groups are invited to set up displays from 11am until 3pm in Balaklava Town Triangle on Saturday March 3 aimed at showing new residents or potential residents what the local

community has to offer.

At 11.30am, Council's consultants will present the first draft of Balaklava's Urban Design in the chambers at Balaklava Civic Centre. This will be followed by an official welcome by Mayor James Maitland.

Negotiations are underway with the RAAF Central Band - Concert Band, who may march and perform during the Welcome to Wakefield event.

RSVP for the lunch by March 1 to Kellie Talbot on 8862 0800, email ktalbot@wakefieldrc.sa.gov.au



Hilairie Pegano on a demonstration site with a taste of Virginia gourmet vegetables

**HIGH TECH. HIGH SPEC**



**B & L30 SERIES  
LOW PRICE  
FROM  
\$20,350 INC GST  
FINANCE AVAILABLE\***  
\* For approved business customers only.

Both Kubota B & L30 Series compact tractors (20-50HP) have more technical innovations and advanced specifications than competitive models.

- Guaranteed Kubota reliability
- Enhanced features
- Hydrostatic transmissions
- Dependable Kubota engines
- Superior hydraulics
- Wider range of models
- Easy to operate
- Mower decks and front end loaders available

**Kubota** *Keeps on going*

**TUNDARRI**  
SALES & SERVICE PTY LTD  
NEW & USED AGRICULTURAL MACHINERY

Barossa Valley  
Way, Gawler East  
PHONE 8522 2188  
a/h Darren 0409 577 811

**SUMMER SAVINGS**

**Standard Lilly Pillies**



• 200mm pot **\$16.95**

**London Plane Trees**



• 200mm pot  
**\$7.95**

**Dark Bamboo Screens**



- 1.8m x 3m
- Great wind break
- Interesting design

**\$35.95**

**Silver Birch Trees**



• 200mm pot  
**\$7.95**



Gawler Road, Virginia  
Phone: 8380 9560

**OPEN 7 DAYS - 8AM TO 5PM**



# Get a fresh taste of our district



**T**HE Adelaide Plains Cup Festival offers visitors and locals alike the chance to taste, smell and experience the uniqueness of our region.

The spotlight will be trained on the Virginia region on Saturday March

3 when it stages BEC Taste the Adelaide Plains 07, thanks to continued sponsorship support from Northern Adelaide Business Enterprise Centre. The prestigious Virgara Winery on Heaslip Road, Angle Vale, will host the event from 10am to 3pm.

Visitors will be able wander through the winery grounds tasting the delights of the region including olives, olive oil, smallgoods, honey, nuts, smoked rabbit, lavender and, of course, wine.

Market-style stalls will be overflowing with fruit and vegetables picked fresh from local market gardens, giving visitors the change to buy produce and chat with growers.

Cooking demonstrations sponsored by Bendigo Bank will fill the air with irresistible aromas. Gourmet delights include buttered herb and garlic mushrooms, crisp summer salad

drizzled with oil and a feast of other sizzling dishes. Community groups will provide a variety of performances and entertainment. A poster competition conducted amongst northern Adelaide schools will be on display with judges deciding winners on the day.

Besides major sponsors, Northern Adelaide Business Enterprise Centre, other local businesses and organisations supporting this year's Taste the Adelaide Plains include Virginia Horticulture Centre, Yorke Regional Development Board, Virgara Winery, Rainbow Fresh, Global Bin Supplies and Bendigo Bank.



VIRGARA wines is preparing for its big day on March 3. Pictured (from left) Tony Virgara, Tony Carapetis, Penny Redmond and Erin Hamood.

• Advertising Feature

# Lifestyle options in Hayfield Plains retirement village

LIFE CARE'S Hayfield Plains development in Balaklava has opened up appealing new lifestyle options for retirees in the region.

Developed in response to community demand for quality retirement housing, Hayfield Plains presents an outstanding opportunity for residents to enjoy newfound leisure time and freedom.

Lyn Polley, Manager Business

Development for Life Care, said quality of life was the driving influence in the design and construction of Hayfield Plains.

"We recognised that country people have been more restricted in their options for retirement lifestyles, often having to live in homes and care for gardens that are too demanding," Lyn said.

"Increasingly, people of retirement age are making the decision to move out of their family home into a smaller property offering a much more relaxed lifestyle with modern conveniences, independence, privacy and low maintenance.

"This option is now available in Balaklava as people recognise the equity they have in their homes and the opportunity to retire into a more relaxed and secure lifestyle at Hayfield Plains."

Hayfield Plains features 33 architecturally designed two and three bedroom homes with low maintenance, landscaped gardens, wide streetscapes and an outstanding community centre that is available for social, cultural, artistic and educational functions and special celebrations.

The homes at Hayfield Plains are keenly priced at \$175,000 for a two-bedroom dwelling and \$185,000 for three bedrooms. "A monthly maintenance fee covers care of lawns and gardens, home insurance, Council rates, the Emergency Services Levy and water rates," Lyn Polley explained.

"Residents can still develop and enjoy their own gardens in privacy, but in the knowledge a structure is in place to ensure their homes and surroundings are

maintained to the highest standards.

"Retirees at Hayfield Plains have the freedom to really enjoy their homes and the community centre, to welcome family and friends, to travel when they desire and come home knowing their dwellings have been secure and maintained.

"Life Care is a not-for-profit organisation at the leading edge of aged care services in South Australia since 1950.

"While the retirement development in Balaklava is our first major investment outside of Adelaide, our commitment extends beyond Hayfield Plains because we want to be part of the broader community in the mid-north region.

"Through sponsorship and support of local organisations, such as the Balaklava Golf Club and Bowling Club, Life Care is promoting healthy lifestyles for all residents in the region."

For more information, call Rebekah Watt on 8239 9800.



NO NEED to worry about maintenance – Hayfield Plains takes care of it for you!








## Hayfield Plains retirees enjoying quality lifestyle options in Balaklava

**Hayfield Plains, Life Care's residential development at Balaklava, offers a new dimension in retirement living in country South Australia.**

The Hayfield Plains development in Diekman Terrace features architecturally-designed, detached and semi-detached two and three bedroom homes with spacious outdoor areas, privacy and delightful streetscapes.

A monthly maintenance fee covers care of lawns and gardens, home insurance, Council rates, the Emergency Services Levy and water rates.

You will have the time to do the things you enjoy. And at the heart of Hayfield Plains is an outstanding community centre that is available for special occasions, social, artistic, cultural and educational events.

Balaklava is a prosperous town with excellent health care, banking, retail and sporting facilities. By settling into a quality lifestyle at Hayfield Plains, you will discover new opportunities to make the most of your leisure time in a great environment.

**For more information, call Rebekah Watt at Life Care on 8239 9800.**

**Life Care**

Helping people live life to their potential as they age

JOIN US AT THE  
**BALAKLAVA BEAD FAIR**

March 3 & 4  
 10am to 4pm at Balaklava Town Hall

**FREE ENTRY**

►Bead Sales & Supplies ►Lampwork beads  
 ►Handmade items ►Kids come 'n' try table ►Demonstrations

For all enquiries phone - Lynda 8862 1545

**Port Wakefield Courthouse**

Open Saturday March 3, 11am to 3pm

• Pictorial displays  
 • Local history  
 • Memorabilia

Featuring  
*"Ketches of the Gulf"*

Gold Coin Donation

West Street, Port Wakefield

adelaide plains

THE NORTHERN ADELAIDE BUSINESS ENTERPRISE CENTRE  
 TASTE THE ADELAIDE PLAINS 2007

- Regional Meals
- Food & Wine Tasting and Sales
- Produce Market Stalls
- Childrens Entertainment
- Schools Competition
- Cooking Demonstrations

Major Sponsor: bec  
 Sponsors: VIRGARA, GARDENIA  
 Presented By: VIRGINIA, YONKIN

Saturday March 3rd  
 VIRGARA WINERY  
 Heaslip Rd  
 Angle Vale  
 10am to 3 pm

For more information simply contact  
 the Virginia Horticulture Centre  
 on (08) 8282 9200

**FREE ENTRY**

Long Plains Cricket Club Presents

**2007 LONGIES FEST**

Saturday March 3  
 at Long Plains Clubrooms  
 (10kms north-east of Dublin)

• Music by - Club 44, Animosity & DJ Fest  
 • Tickets \$10 • Doors open 7pm  
 • All ages • ID required for drink tags

Register your interest now for the City Bus,  
 for more details go to  
<http://longiesfest.spaces.live.com>

Grandeur Press  
 Design • Print • Copy • Promotion

Booster

Mallala Hotel

**Special Adelaide Plains Cup festival**

adelaide plains

▼ what's on?

**DOWN TO EARTH**

**WHEN:** Friday March 2, 2pm to 4pm; Saturday March 3 and Sunday March 4, 11am to 5pm  
**WHERE:** Balaklava Courthouse Gallery, 6 Edith Terrace.  
**WHAT:** Exhibition of works by seven Adelaide Plains artists. Exhibits include a wide variety of subjects in a lively mix of predominantly painting, watercolour, acrylic and oil.



JEN Searle will exhibit her work in the Balaklava Courthouse Gallery

adelaide plains

▼ what's on?

**Lively mix from local artists**

ADELAIDE Plains Cup Festival is a fitting occasion for Balaklava Courthouse Gallery to celebrate its tenth year of operation. The popular gallery will stage an exhibition specifically promoting this year's festival theme.

"Down to Earth on The Plains" will showcase paintings by local practising artists of Balaklava Art Group.

The group boasts several established artists and always welcomes beginners and other practising artists.

This celebration exhibition will complement other programmed visual arts, crafts and images which will be on display in Balaklava. Works on display through the festival embrace a wide variety of subjects in mediums including watercolour, acrylic and oil.

Balaklava Courthouse art gallery is truly a centre for the people of the region as it stands as the only community art gallery with a constant program of exhibitions in the Adelaide Plains.

**The Plains Producer**

Part of your local community for more than 100 years

We're Adelaide Plains **PROUD!**

PHONE: 8862 1977

**TOUCH FOOTBALL**

**WHEN:** Sunday, March 4 from 8.45am.  
**WHERE:** Balaklava High School sporting grounds  
**WHAT:** Mixed Touch Football competition

FOLLOWING on from Gawler's inaugural win of the 2006 Adelaide Plains Touch Football Challenge, this year's play-off will have even more South Australian Touch Football club affiliates competing.

A mixed team from Mildura will descend on Balaklava for a Sunday morning mixed team competition.

Recognised as one of the most popular and family-friendly sports in Australia, touch football has been played in South Australia since the late 1970s with local competitions played at Clare, Gawler and Barossa.

This year's challenge will be again held at the Balaklava High School sporting grounds from 8.45am. The final is scheduled for 11.15am but there won't be much time for celebrating as players will be rushing off to the races for some serious socialising at sport of a very different kind.

Plans are now underway to hold the State Touch Football Cup in Balaklava in 2008. Those who have never seen the sport of touch should make a bee line to the grounds on Sunday morning to catch the fast and furious action.

**BUY DIRECT FROM THE MANUFACTURER**

**ROLLER SHUTTERS**

**35% OFF**

Protects against  
 • Wind/storms  
 • Heat/cold  
 • Noise/light

Manual, electric or solar powered.  
 Repairs & servicing to all Roller Shutters

**FREE QUOTES**

**SHOWER SCREENS**

**Versatile designs**

- Custom built to any height, width and angle
- Fitted to shower tray or floor
- Easy to clean

**Protect yourself from intruders ...**

**MS MASTERGUARD SECURITY**

16 Bernard Court, Industrial Park, Gawler Belt

**8523 1737**

# Adelaide Plains Cup festival

March 2 - 4

## SPECIAL Feature

# Blend the past with present

STEP back into time with a visit to Balaklava Museum and Urlwin Park. Balaklava Museum operates the Centenary Hall folk museum in May Terrace as well as Urlwin Park Agricultural Museum in Short Terrace.

Formed 35 years ago as an historical society, before becoming a branch of National Trust, it has since reverted to its local community base in 2004, resulting in considerable growth in membership and public awareness of what the museum is all about.

Formerly Balaklava's first high school, a lodge hall and Lutheran church, Centenary Hall now houses local memorabilia and a large collection of household items from bygone days.

Urlwin Park, once a renowned poultry farm, is home to the Balaklava-made collection of horse-drawn vehicles and early agricultural machinery, the historic Corduroy Road, stationary engines, Halbury Bank, telecommunications equipment and a working blacksmith shop.

With Balaklava now included in the Heartlands Heritage Trail, the Museum offers a guided town history tour for bus groups (strictly by appointment only).

Brochures for walking and self-drive history tours of the town are available from the Museum, Royal Hotel and Wakefield Regional Council office.

For further enquiries phone promotions officer, Norma Schopp on 8862 1854.



▼ what's on?

### OUR HERITAGE

**WHEN:** 10am to 3pm Saturday March 3 and Sunday March 4

**WHERE:** Balaklava Museum, May Terrace, and Urlwin Park, Short Terrace.

**WHAT:** Balaklava Museum: Display of historical memorabilia, self-guided walking or driving town tours. Bus town history tours by appointment only. Urlwin Park: Working displays of locally-made horse-drawn vehicles, farm machinery and telecommunications equipment.

**COST:** Adults \$3, children 50 cents.



▼ what's on?

### LONGIES FEST

**WHEN:** Saturday March 3, 7.30pm

**WHERE:** Long Plains oval.

**WHAT:** Live music, lots of fun.

MUSIC and fun is the focus of a great night at Longies Fest, Long Plains, organised by the local cricket club.

Held on Saturday, March 3, the evening includes performances by Animosity, Club 44, and DJ Fest. Apart from being a major fundraiser for Long Plains Cricket Club, the event supports bands which cover Aussie music. Animosity debuted at Longies Fest 2006, and were crowd favourites. The four boys from Roseworthy and Gawler play great tunes including some by bands Grinspoon and Silverchair. Animosity takes the stage from 7.30pm to 9pm. Club 44 will then entertain the crowd until 12.30pm, covering bands from Crowded House to Foo Fighters. For the final hour, DJ Fest comes on board. Entry costs \$10, and the event is open to all ages, but identification is required for drink tags. For more information visit <http://longiesfest.spaces.live.com>.



ROY and Norma Schopp at an Urlwin Park display.



▼ what's on?

### DISPLAY HOMES

**WHEN:** Friday March 2, 9.30am to 8.30pm; Saturday March 3 and Sunday March 4, 9.30am to 6pm

**WHERE:** Wattle Ridge display village, Balaklava.

**WHAT:** Open house at the new display village with a free barbecue on Friday night and entertainment by BalCanto.

## Wattle Ridge open

WATTLE Ridge display village will be open for inspection throughout the Adelaide Plains Cup Festival weekend.

The highlight will be a special open house on Friday March 2 at 6pm featuring a free community barbecue and special performance by BalCanto.

Local Lions Club members will fire up the barbecue from 6.30pm until 7.30pm and will be free to people who collect a token after visiting all three display homes

Local choral group, BalCanto, will perform at 7.00pm and again at 7.45pm.

As an added bonus, those who tour the display village and complete an entry form will go in a draw to win two tickets for a lunch package, including entry and drinks, to Primo Adelaide Plains Cup on the Sunday.

The winner will be drawn at 8pm with the display village remaining open until 8.30pm.

The first 30 people to tour the display homes on Saturday will also receive free tickets to the Sunday race day.

The special offer will be repeated on Sunday with the first 20 people to tour the display homes receiving free Sunday race tickets.



▼ what's on?

### GOLF: OPEN AMBROSE

Sponsored by Landmark

**WHEN:** Saturday March 4, 9:30am-12pm

**WHERE:** Balaklava Golf Course  
**WHAT:** Sponsored by Landmark, there's no better place to play golf in a friendly team event.

## Tee up for some fun

GOLF enthusiasts will gather on the picturesque greens of Balaklava Golf Club during the Adelaide Plains Cup Festival for an open ambrose.

The competition, held on Saturday, March 3, will be played in teams of four, making it a fantastic opportunity to socialise while enjoying the sport.

Sponsored by Landmark, the competition costs \$50 per team, which includes a barbecue tea.

Tee off is at 9.30am to 4pm.

For more information, contact 8862 1612.

Balaklava Golf Club is located four kilometres east of Balaklava on Auburn Road.



MASSEY FERGUSON

- Sales • Repairs
- Spare Parts
- On site servicing

Authorised Dealers for Adelaide Plains



**TUNDARRI SALES & SERVICE PTY LTD**  
NEW & USED AGRICULTURAL MACHINERY  
Barossa Valley Way, Gawler East  
Ph 8522 2188 a/h Darren 0409 577 811

LMV 48217



## McCRACKEN FORD

### FORD BF FALON XR6 SEDAN



## DEMO CLEARANCE

- > 4.0 Ltr
- > 6 Speed Auto
- > Cruise Control
- > ABS brakes
- > Alloy Wheels
- > Rear Spoiler
- > Only 2,000kms
- > Plenty of Rego
- > Full Factory Warranty
- > White
- > JXV 275

Price does not include stamp duty and transfer fee

**WHY BUY NEW? ONLY \$29,990**

**Ray McCracken on 8862 1477 A/hrs 8862 1212 - Balaklava**

# HEASLIP CAMPERS



- Off road Camper Trailers
- Traytop Camper for one Tonne Tray Top utes
- Kitchen top Campers

### TRAYTOP WINNER

4x4 Australia Industry Award - 'Best Camping Product' Caravan & Motorhome - Best Slide-On/Camper Trailer

- Engel & EvaKool Refrigeration
- Hillbilly Camping Gear

Web: [www.heaslipcampers.com.au](http://www.heaslipcampers.com.au)

Email: [info@heaslipcampers.com.au](mailto:info@heaslipcampers.com.au)



Contact Rob, Judy or Greg on (08) 8280 9488 Fax (08) 8280 9933  
Cnr. Port Wakefield Rd & Burton Rds, Burton SA 5110

# Workshop the pathway to poetry

HAVE you heard about the Country Pubs and the Bush poetry competition, but didn't think your work was good enough to enter?

Come along to Adelaide Plain Poets poetry workshop on Saturday March 3 at the Mallala Institute from 10.30am to 4.00pm.

With help and wise words from workshop presenter, widely-published poet, Jeff Guess, you could be well on the way to increasing your chance of winning a poetry competition in 2008!

The workshop, at Mallala Institute, is open to all South Australian country residents.

The workshop costs \$25.00 per person, or \$20.00 concession holders and includes lunch.

It will open with an initial talk from the presenter on contemporary poetry followed by students writing their own poetry.

The main focus will be on the production of poems in a form that is acceptable to contemporary poetry markets such as literary/poetry magazines, and publishers of contemporary poetry.

Students will learn about potential markets for their poetry as well as critiquing skills, including the ability to objectively critique their own work.

There will also be an opportunity to read your own work in public - an extremely useful skill in furthering a poet's career.

The workshop is supported by Country Arts SA.

Winners of the Country Pubs and The Bush poetry competition will be announced at Adelaide Plains and its Castles at the ABB silos later that evening.

The workshop costs \$25 and includes lunch.

To secure your spot or find out more about the poetry competition phone Carolyn Cordon on 8527 2412 or email her at gracar@twpo.com.au.



▼ *what's on?*

## PUBS and POETRY

**WHEN:** Saturday March 3  
**WHERE:** Mallala Institute, Dublin Road.  
**WHAT:** Poetry workshop featuring guest workshop presenter and South Australian poet, Jeff Guess.

buffet dining **ALL YOU CAN EAT**

**All You Can Eat**  
 Saturday Nights  
 - Adults \$15  
 - Kids \$7


**A La Carte**  
 Thursday & Friday

- Cafe Style Coffee
- Beer Garden
- Pokie Machines
- ATM Facilities
- Friendly Service
- Fun Atmosphere
- Families Welcome
- Accommodation

For all enquiries please call 08 85286008

# OWEN ARM SHOTEL

## For a great meal for all the family call in for lunch & dinner



**Thursday Night Specials:**

- ★ Steak \$9.50
- ★ Beef or chicken schnitzel \$7.50

• Daily Specials  
 • Lunch Meals: 12noon - 2pm  
 Dinner: 6pm - 8.30pm

The atmosphere's great at the

## PORT WAKEFIELD HOTEL

**PHONE: 8867 1016**

*While at the Adelaide Plains Cup Festival*

## BOOK IN FOR BREAKFAST BEFORE THE CUP!

- Now doing breakfast every Sunday 9am to 11am  
 - lunch & dinner 7 days



*Ask us about organising your next function, celebrate in the hotel or for something a little different, out the back - in the home of backyard cricket!*

Phone Dylan or Bek  
**ON 8527 2249**

Mallala Hotel

## TOP QUALITY COUNTRY PUB MEALS

now available

*Hosts Margie and Joff invite you to call in and enjoy a family night out*

- Lunch: Thursday to Sunday
- Dinner Thursday to Saturday
- Toasted sandwiches available anytime

## LOWER LIGHT HOTEL

Phone: 8520 2003 - on the Highway

- Gary & Nadene Wehr -

## Enjoy the comforts of home on the Cup weekend!

- Elegantly furnished
- Fully self-contained
- Sleeps 4 people
- Reverse Cycle A/C
- TV/DVD/CD
- Walking distance from Balaklava CBD
- Provision for cooked/continental breakfast



## Balaklava Bed & Breakfast

3 Fisher St, Balaklava - Ph 0438 886 210 Email: balaklavab&tb@rbe.net.au

## Pt Wakefield Motel



On Highway at Pt Wakefield

- Friendly Service
- Affordable Prices
- Comfortable Clean Rooms
- 2 self contained serviced houses also available



## Ph/Fax 8867 1271

# RAAF big band sound will have Balaklava swinging



RAAF Central Band has established a tradition of combining versatility with musical experience, and will perform at the Adelaide Plains and its Castles event as part of the Adelaide Plains Cup Festival.

The band will perform a range of big band music, and could even work with other performers to help build the party atmosphere.

The group may also perform at the Welcome to Wakefield

event if negotiations are successful.

RAAF Central Band offers a complete range of musical styles to suit any event, from service parades and formal military functions to charity concerts and balls, recitals, and other special events.

Because of the variety of musical styles required to meet its mission, Central Band provides a ceremonial band, fanfare team, show band, brass

quintet, woodwind quintet, clarinet quartet, jazz ensemble, vocalists, and other ensembles, as well as the concert band, which will perform in Balaklava on Saturday, March 3.

The band's commanding officer and musical director is squadron leader Steve Wright.

The RAAF Central Band has evolved from a camp orchestra originally formed in March, 1916 by Number One Squadron of the Australian Flying Corps, which

sailed from Port Melbourne to Egypt and musicians within the group formed a concert party and camp orchestra for the squadron's entertainment.

Similar entertainment troupes were formed at various bases during the war.

A part time RAAF band was formed in February 1923 soon after the creation of an independent Royal Australian Air Force. It became a permanent band in 1952.

THE RAAF band will play a range of music from big band swing to jazz.



what's on?

## PRIMO AUSTRALIA ADELAIDE PLAINS CUP

**WHEN:** Sunday, March 4 from 10.30am.

**WHERE:** Balaklava Racing Club.

**WHAT:** Running of the Adelaide Plains Cup, Coopers keg roll, Colts and Fillies marquee and talent quest final.

## Get on a favourite



HUMMOCKS Watchman Eagles won last year's keg roll.

WHETHER it's the infamous Coopers Great Keg Roll, or the battle for first place around the track, there will be plenty of action at Balaklava Race Course at the Primo Australia Adelaide Plains Cup on Sunday, March 4.

The event is geared up to be bigger than ever, with the final of the inaugural Adelaide Plains talent quest and announcement of the winner.

With a trip for two to the value of \$4000 to be won in the talent quest, and 52 cartons of Coopers ales awarded to the winning team of the Coopers Great Keg Roll, competition among racegoers is bound to be just as fierce as that on the track. The Colts and Fillies Marquee will be a popular trackside destination at \$75 per person, all inclusive. There are free rides for kids throughout the day and a live after-race band from 6pm to 9pm. The Primo Australia Adelaide Plains Cup day begins at 10.30am.



FUN for the kids.

# Primo Australia Adelaide Plains Cup

## Balaklava Races

### Sunday 4th March 2007

**WINNER**  
Adelaide Plains  
**TALENT QUEST**  
**ANNOUNCED!!!**

**COOPERS GREAT KEG ROLL**  
Free entry, teams of 6 people inc at least 2 females.  
Relay roll a keg, 20m to win  
52 Ctns of "COOPERS ALES"  
Enter your team now with the club.

**Regional Talent Quest Final**  
Free Kids rides  
Food & Wine Tasting

**Colts & Fillies Marquee**  
\$75 all inclusive.

*The Taste of Tradition*

**COLTS & FILLIES**  
**Messenger**  
**FINAL!!**

**AFTER RACE LIVE BAND 6-9PM**

Going beyond expectations

# Messenger

COMMUNITY NEWSPAPERS

ENQUIRIES CONTACT THE CLUB:  
8862 1503 EMAIL: dcrhall@bigpond.net.au

get it **trackside**

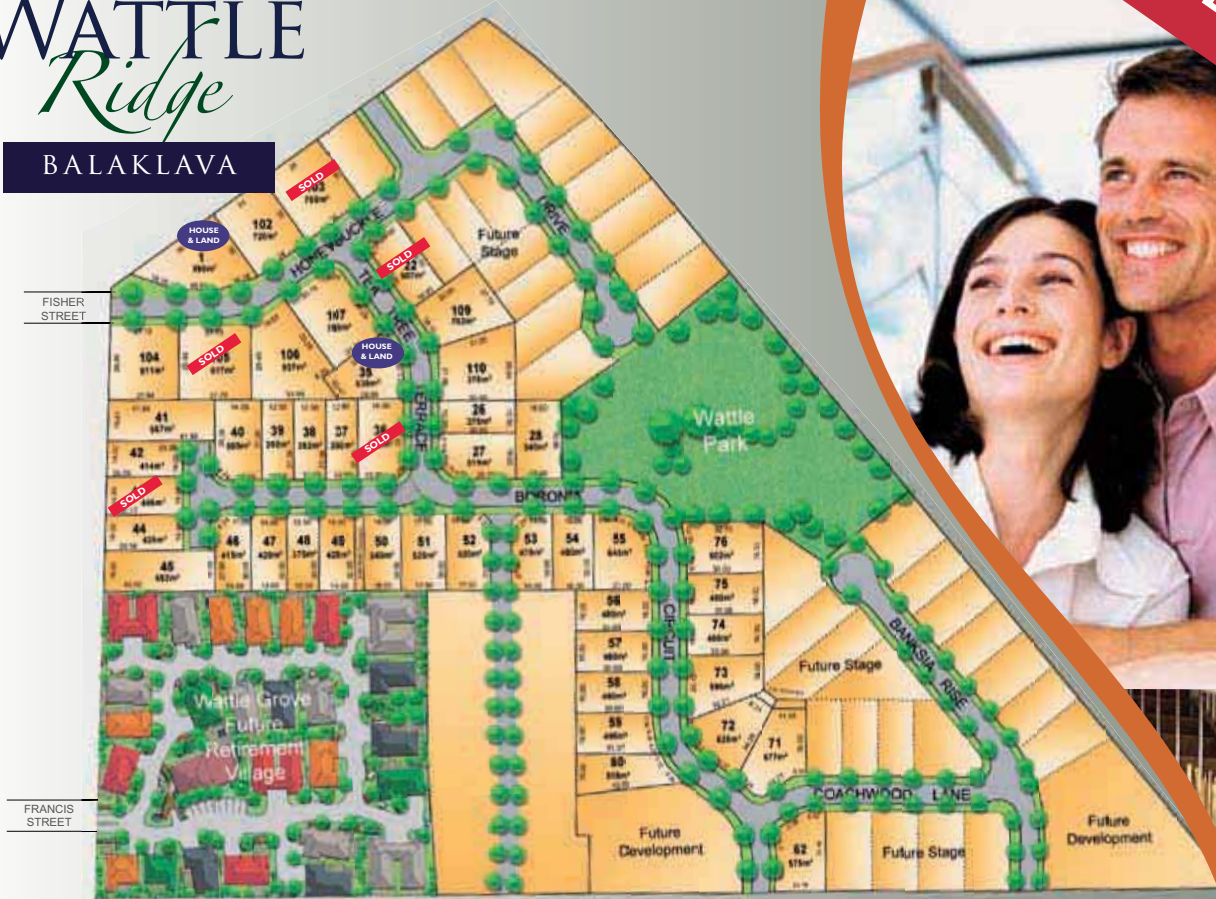
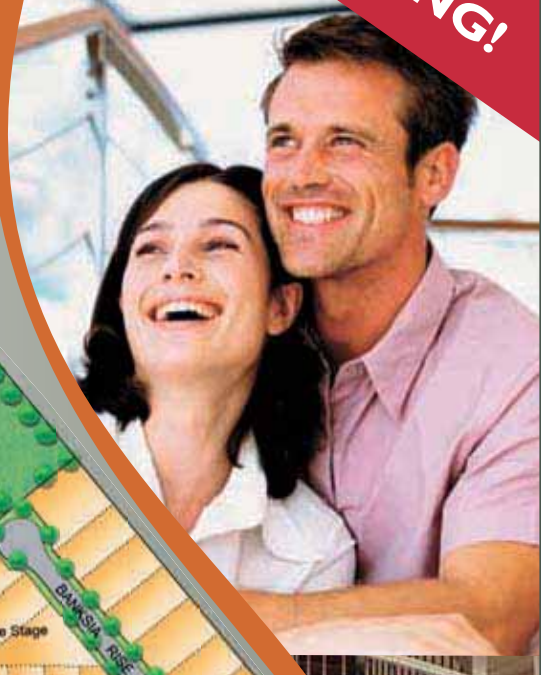
Photo by Bob Leaking



# WATTLE Ridge

BALAKLAVA

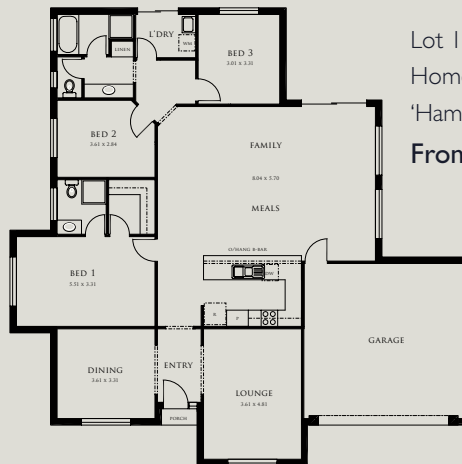
**NOW SELLING!**



## HOUSE & LAND PACKAGES



Lot 35 Tea Tree Terrace  
Homestead Homes  
'Everton'  
From \$209,950



Lot 1 Honeysuckle Drive  
Homestead Homes  
'Hamilton'  
From \$242,700

There is a lot to like about Wattle Ridge.

This beautifully planned estate combines open space and a range of sites ideally suited to first home buyers, investors and those desiring to build the home of their dreams.

- Allotments from 375m<sup>2</sup> to 937m<sup>2</sup>
- No stamp duty & \$7,000 grant for first home buyers
- House & land packages available
- Priced from \$44,950
- Choose your own builder
- No time limit to build
- Large landscaped community reserve



Jack Reddin Real Estate  
190 Main North Road Clare SA  
Telephone 08 8842 1154  
Email clare@jackredden.com.au



Peter & Tania Buttefield  
22 George Street Balaklava SA 5461  
Mobile 0417 884 877  
Office 08 8862 2172



Homestead Homes Pty Ltd  
928 North East Road Modbury SA 5092  
Enquiries: Colin Steinert  
Telephone 08 8261 8766 Mobile 0407 619 381